

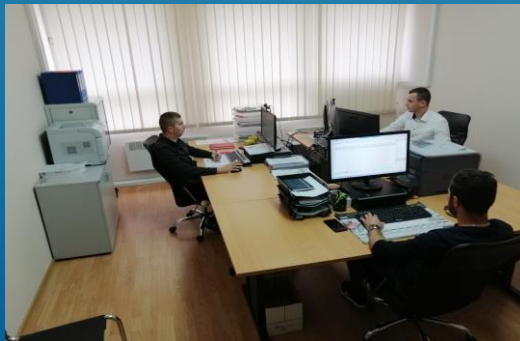


S steel-form

**The measure of our
success is quality**

WHO WE ARE

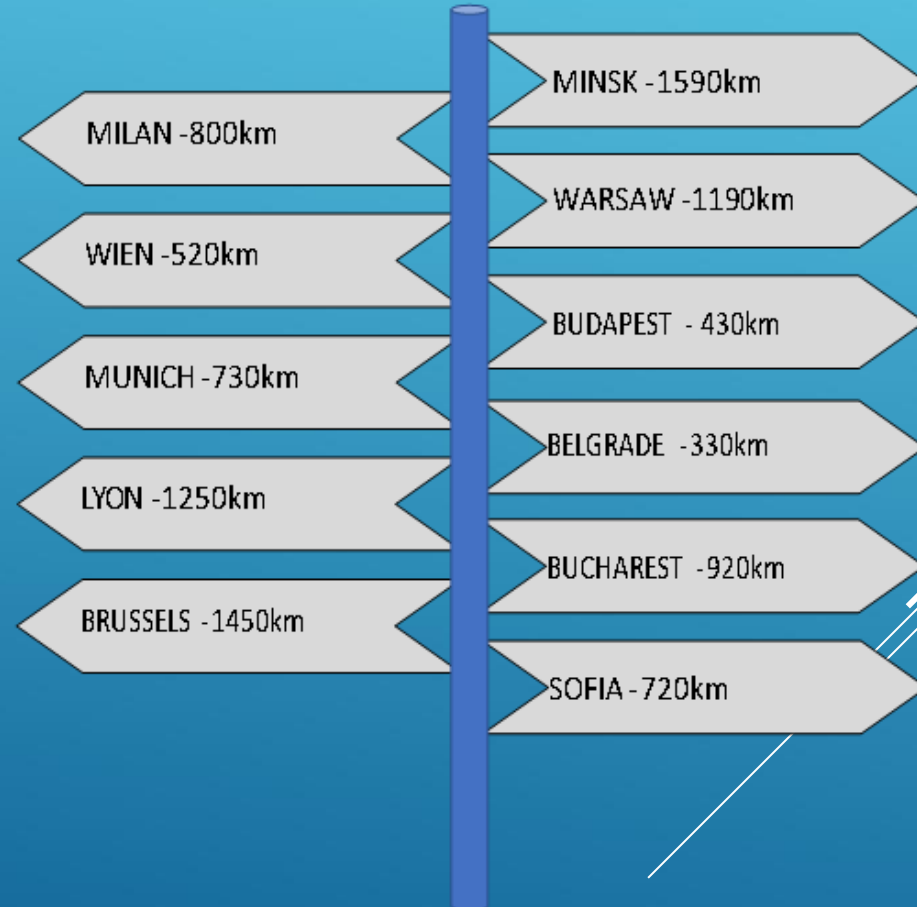
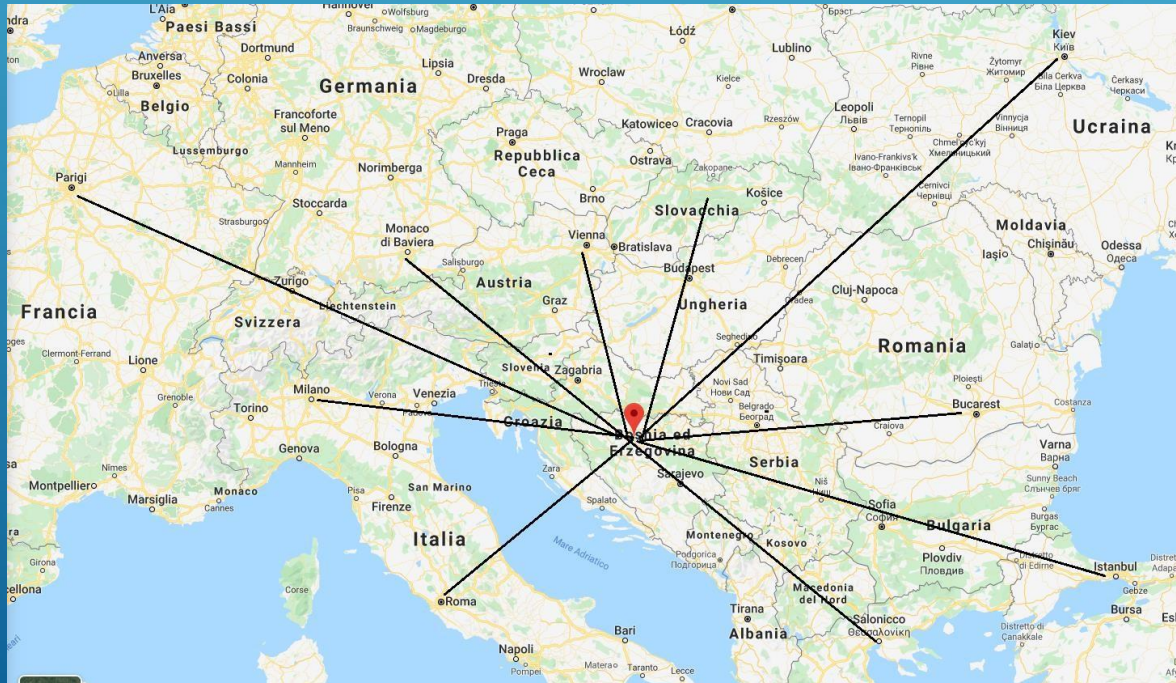
- Steel Form d.o.o. is a young and dynamic company with a consolidated knowledge of metalworking.
- Steel Form was founded in early 2018, separating from part of the production of Iron Tech, company which has been operating in Čelinac (Bosnia and Herzegovina) since 2010.
- The Steel Form company is spread in area of 3700 square meters - production space and offices.
- Steel Form currently employs 32 skilled and strictly specialized workers, trained for the production of products at the request of our customers.
- The company is export-oriented and exports 95% of production and services to the EU market, most of which is exported to Italy.
- In our company you can find a young and educated team that will always be at your service and they speak fluent Italian, English and German.
- Thanks to the high volume of work and constant export to EU countries, we also offer weekly deliveries of our products to our customers.



WHERE WE ARE

Steel Form d.o.o. is located in Čelinac (Banja Luka), Bosnia and Herzegovina, at strategic position in the heart of Europe.

The company is located near the highway that connects our region with the rest of Europe.

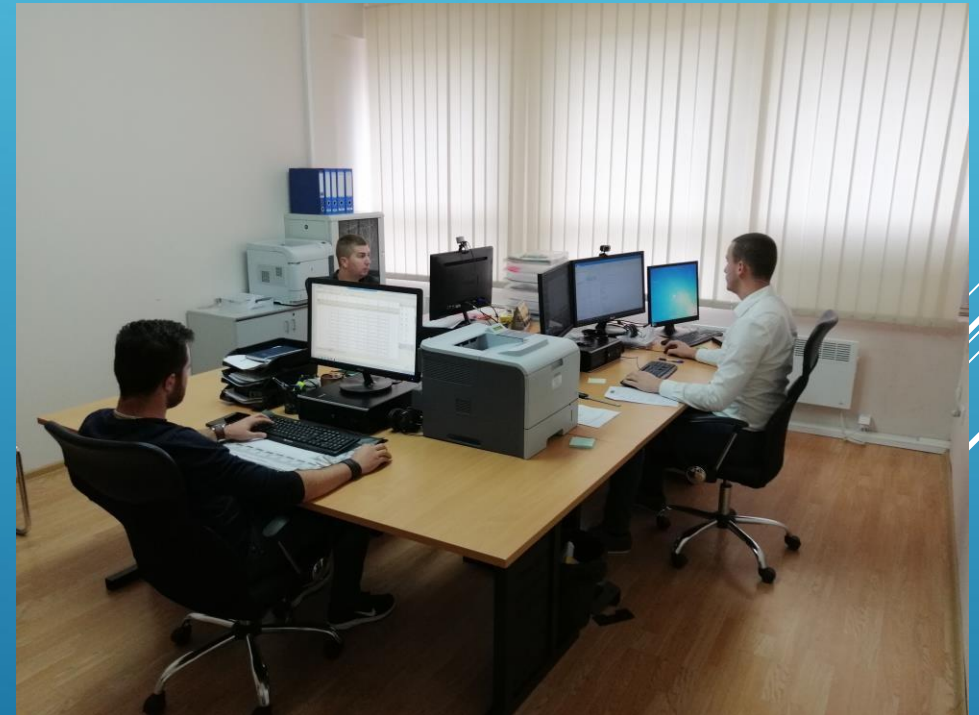
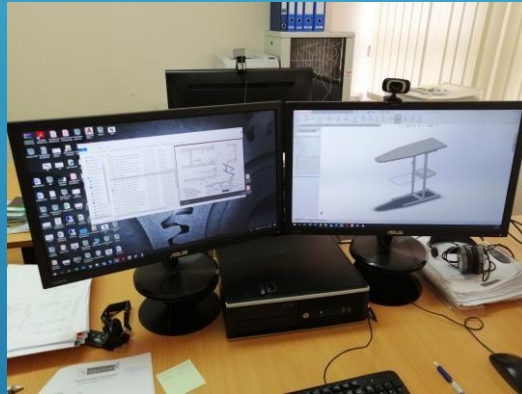


OUR SERVICES

- Steel Form d.o.o. offers a wide range of service tailored to meet customer needs. It is able to adapt and respond to the most specific needs and challenges of different market goals and objectives.

- Major services:

- Customized products
- Dwg (3D)
- Prototype
- Offer calculation
- Technical customer support
- Compliance with EU standards
- Deliver: 48 / 72H,
- Different types of treatment



OUR STRUCTURE

- Steel Form d.o.o. offers a wide range of services and metal products thanks to its different machines and tools, the company in possession has automatic, semiautomatic and CNC controlled machines:
 - Laser cutting machine
 - Punching machine
 - Saw
 - Machine press
 - Robot welding
 - Manual welding machine
 - Bending machines
 - Press press breaks up to 4m
 - CNC milling
 - CNC turning



With our machines we can produce metal products for different sectors.

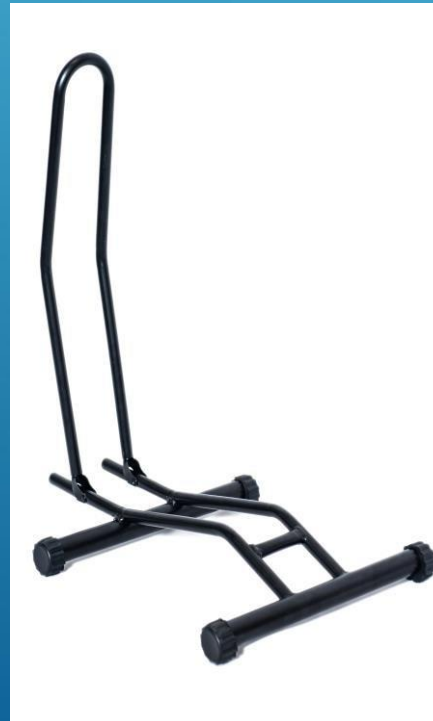
CUSTOMERS AND PRODUCTS

S steel-form

The main objective of our company is customer satisfaction, the production of high quality products, customer compliance and delivery times.

We present you some products that we produce for our customers from EU countries.

Standard products



STORAGE SYSTEMS

Together with our partner company Metal House from Italy, which has many years of experience in building warehouses, we build storage spaces for your needs.

Efficiency is a key element in the management of a company: our logistic facility will increase your warehouse efficiency with excellent results reflected in all departments.

Versatility and simplicity: the construction technology of our product allows a drastic reduction in assembly time and therefore the overall costs for the company.



Automatic trolley divider



Trolley conveyor

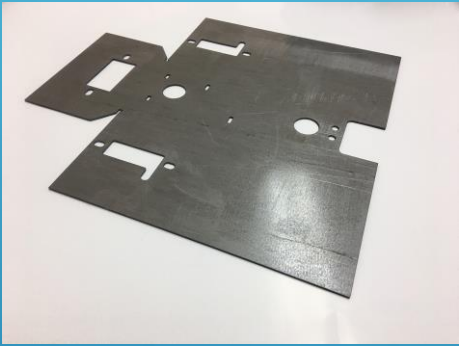


Storage System

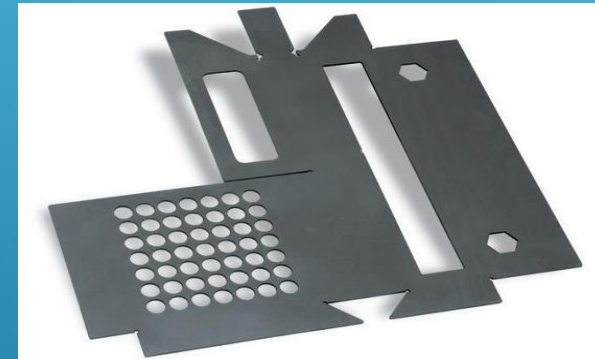
For more information, visit
the website:
www.metalhouse-int.com

REQUEST PRODUCTS

Laser cutting, punching and bending press products (semi-finished products).



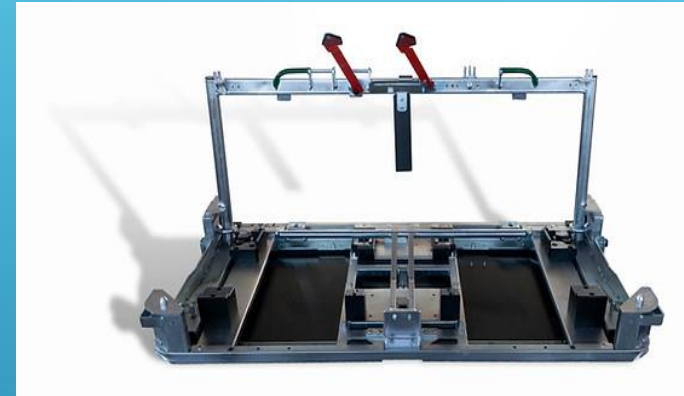
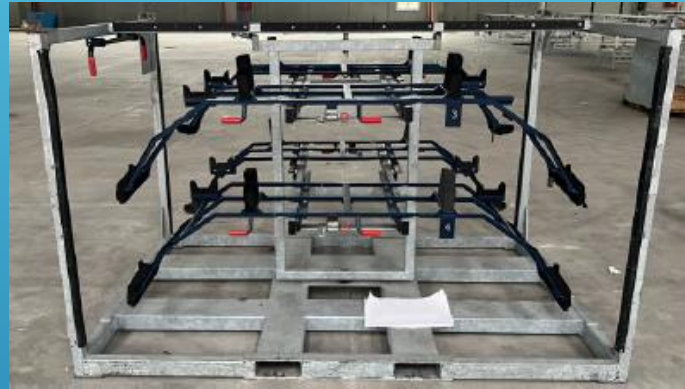
In the photos there are some details that we produce in our CNC department, as per customer request.



PRODUCTS ON CUSTOMER'S REQUEST

(PRODUCTS WE CAN PRODUCE)

Finished products, semi-finished products at the request of customers



In addition to product design and production, our company, in collaboration with our partners, offers surface protection such as galvanizing and painting, supporting customers' needs.

OUR REFERENCES

At the reference list you can find the names of some reputable companies that use our services, evaluating the competence and mutual trust that we have developed during our collaboration:

- Metal House s.r.l. Italy
- Sintesi s.r.l. Italy
- Carbone s.r.l. Italy
- Eurogrifer s.r.l. Italy
- Bleichert Automation GmbH Germany
- LKE GmbH Germany
- Schneeichler Driving Innovation GmbH Austria
- Var GmbH Germany
- Kadic NV Belgium
- Greenleaf GmbH Germany
- Dal Cin d.o.o. Bosnia and Herzegovina
- This is only one part of the companies that we work with successfully.



Greenleaf |



OUR CERTIFICATES

Our company owns and operates under ISO 9001:2015 certification as well as welding certificates:

EN1091-1

EN1091-2

EN ISO 3834-2

CERTIFICATE

The Organization:
STEEL-FORM d.o.o.
Cara Dušana 4
78240 Čelinac
Bosnia and Herzegovina

implements a management system that meets the requirements of the standard:
ISO 9001:2015
Quality Management System

Scope of Certification:
Preparation and protection of metal products and parts.

Certificate Code: AV8653R214Q Initial Certification: 29.12.2019
Certification Decision: 29.12.2022
Certificate Issue: 02.12.2024
Certificate Expiry: 19.12.2025

The certification was carried out in accordance with the AVRV's Terms and Conditions for Certification and remains in force following regular surveillance visits.

On behalf of AVRV
Nikola G. Trachstetzer
Managing Director


AVRV Institute, Assessment and Certification A.B.
16, 18, 19, 20, 21, 22, 23, 24, 25, 26, 27, 28, 29, 30, 31, 32, 33, 34, 35, 36, 37, 38, 39, 40, 41, 42, 43, 44, 45, 46, 47, 48, 49, 50, 51, 52, 53, 54, 55, 56, 57, 58, 59, 60, 61, 62, 63, 64, 65, 66, 67, 68, 69, 70, 71, 72, 73, 74, 75, 76, 77, 78, 79, 80, 81, 82, 83, 84, 85, 86, 87, 88, 89, 90, 91, 92, 93, 94, 95, 96, 97, 98, 99, 100, 101, 102, 103, 104, 105, 106, 107, 108, 109, 110, 111, 112, 113, 114, 115, 116, 117, 118, 119, 120, 121, 122, 123, 124, 125, 126, 127, 128, 129, 130, 131, 132, 133, 134, 135, 136, 137, 138, 139, 140, 141, 142, 143, 144, 145, 146, 147, 148, 149, 150, 151, 152, 153, 154, 155, 156, 157, 158, 159, 160, 161, 162, 163, 164, 165, 166, 167, 168, 169, 170, 171, 172, 173, 174, 175, 176, 177, 178, 179, 180, 181, 182, 183, 184, 185, 186, 187, 188, 189, 190, 191, 192, 193, 194, 195, 196, 197, 198, 199, 200, 201, 202, 203, 204, 205, 206, 207, 208, 209, 210, 211, 212, 213, 214, 215, 216, 217, 218, 219, 220, 221, 222, 223, 224, 225, 226, 227, 228, 229, 230, 231, 232, 233, 234, 235, 236, 237, 238, 239, 240, 241, 242, 243, 244, 245, 246, 247, 248, 249, 250, 251, 252, 253, 254, 255, 256, 257, 258, 259, 260, 261, 262, 263, 264, 265, 266, 267, 268, 269, 270, 271, 272, 273, 274, 275, 276, 277, 278, 279, 280, 281, 282, 283, 284, 285, 286, 287, 288, 289, 290, 291, 292, 293, 294, 295, 296, 297, 298, 299, 300, 301, 302, 303, 304, 305, 306, 307, 308, 309, 310, 311, 312, 313, 314, 315, 316, 317, 318, 319, 320, 321, 322, 323, 324, 325, 326, 327, 328, 329, 330, 331, 332, 333, 334, 335, 336, 337, 338, 339, 340, 341, 342, 343, 344, 345, 346, 347, 348, 349, 350, 351, 352, 353, 354, 355, 356, 357, 358, 359, 360, 361, 362, 363, 364, 365, 366, 367, 368, 369, 370, 371, 372, 373, 374, 375, 376, 377, 378, 379, 380, 381, 382, 383, 384, 385, 386, 387, 388, 389, 390, 391, 392, 393, 394, 395, 396, 397, 398, 399, 400, 401, 402, 403, 404, 405, 406, 407, 408, 409, 410, 411, 412, 413, 414, 415, 416, 417, 418, 419, 420, 421, 422, 423, 424, 425, 426, 427, 428, 429, 430, 431, 432, 433, 434, 435, 436, 437, 438, 439, 440, 441, 442, 443, 444, 445, 446, 447, 448, 449, 450, 451, 452, 453, 454, 455, 456, 457, 458, 459, 460, 461, 462, 463, 464, 465, 466, 467, 468, 469, 470, 471, 472, 473, 474, 475, 476, 477, 478, 479, 480, 481, 482, 483, 484, 485, 486, 487, 488, 489, 490, 491, 492, 493, 494, 495, 496, 497, 498, 499, 500, 501, 502, 503, 504, 505, 506, 507, 508, 509, 510, 511, 512, 513, 514, 515, 516, 517, 518, 519, 520, 521, 522, 523, 524, 525, 526, 527, 528, 529, 530, 531, 532, 533, 534, 535, 536, 537, 538, 539, 540, 541, 542, 543, 544, 545, 546, 547, 548, 549, 550, 551, 552, 553, 554, 555, 556, 557, 558, 559, 560, 561, 562, 563, 564, 565, 566, 567, 568, 569, 570, 571, 572, 573, 574, 575, 576, 577, 578, 579, 580, 581, 582, 583, 584, 585, 586, 587, 588, 589, 590, 591, 592, 593, 594, 595, 596, 597, 598, 599, 600, 601, 602, 603, 604, 605, 606, 607, 608, 609, 610, 611, 612, 613, 614, 615, 616, 617, 618, 619, 620, 621, 622, 623, 624, 625, 626, 627, 628, 629, 630, 631, 632, 633, 634, 635, 636, 637, 638, 639, 640, 641, 642, 643, 644, 645, 646, 647, 648, 649, 650, 651, 652, 653, 654, 655, 656, 657, 658, 659, 660, 661, 662, 663, 664, 665, 666, 667, 668, 669, 670, 671, 672, 673, 674, 675, 676, 677, 678, 679, 680, 681, 682, 683, 684, 685, 686, 687, 688, 689, 690, 691, 692, 693, 694, 695, 696, 697, 698, 699, 700, 701, 702, 703, 704, 705, 706, 707, 708, 709, 710, 711, 712, 713, 714, 715, 716, 717, 718, 719, 720, 721, 722, 723, 724, 725, 726, 727, 728, 729, 730, 731, 732, 733, 734, 735, 736, 737, 738, 739, 740, 741, 742, 743, 744, 745, 746, 747, 748, 749, 750, 751, 752, 753, 754, 755, 756, 757, 758, 759, 760, 761, 762, 763, 764, 765, 766, 767, 768, 769, 770, 771, 772, 773, 774, 775, 776, 777, 778, 779, 780, 781, 782, 783, 784, 785, 786, 787, 788, 789, 790, 791, 792, 793, 794, 795, 796, 797, 798, 799, 800, 801, 802, 803, 804, 805, 806, 807, 808, 809, 810, 811, 812, 813, 814, 815, 816, 817, 818, 819, 820, 821, 822, 823, 824, 825, 826, 827, 828, 829, 830, 831, 832, 833, 834, 835, 836, 837, 838, 839, 840, 841, 842, 843, 844, 845, 846, 847, 848, 849, 850, 851, 852, 853, 854, 855, 856, 857, 858, 859, 860, 861, 862, 863, 864, 865, 866, 867, 868, 869, 870, 871, 872, 873, 874, 875, 876, 877, 878, 879, 880, 881, 882, 883, 884, 885, 886, 887, 888, 889, 890, 891, 892, 893, 894, 895, 896, 897, 898, 899, 900, 901, 902, 903, 904, 905, 906, 907, 908, 909, 910, 911, 912, 913, 914, 915, 916, 917, 918, 919, 920, 921, 922, 923, 924, 925, 926, 927, 928, 929, 930, 931, 932, 933, 934, 935, 936, 937, 938, 939, 940, 941, 942, 943, 944, 945, 946, 947, 948, 949, 950, 951, 952, 953, 954, 955, 956, 957, 958, 959, 960, 961, 962, 963, 964, 965, 966, 967, 968, 969, 970, 971, 972, 973, 974, 975, 976, 977, 978, 979, 980, 981, 982, 983, 984, 985, 986, 987, 988, 989, 990, 991, 992, 993, 994, 995, 996, 997, 998, 999, 1000

Technischer Überwachungsverein Thüringen e.V.

CERTIFICATE
The Certification Body for
Construction Products of TÜV Thüringen e.V.
certifies the company



STEEL - FORM d.o.o.
Cara Dušana 4
78240 Čelinac, Bosnia and Herzegovina

has established and applies a quality system according to
DIN EN ISO 3834-2
Comprehensive quality requirements
in the specified scope to the annex of certificate

report no.: SB06/61924/24
certificate no.: 0090 152 1278
certificate expires: 2026-01-30


Technischer Überwachungsverein Thüringen e.V.
Certification Body for
Construction Products
(Name, sign)

Valid only with hologram
Erfurt, 2024-03-13


DAkkS
Certification Body for
Construction Products
(Name, sign)

00901521278
01/31/2025

Technischer Überwachungsverein Thüringen e.V.
Notified Body Nr. 0090

**Certificate of conformity
of the
Factory Production Control
0090-CPR-1090-1.0002.TÜVTH.2023.01**

In compliance with Regulation 305/2011/EU of the European Parliament and of the Council of 09 March, 2011
(Construction Products Regulation – CPR),
this certificate applies for following construction products:

Product: Structural Steel Components up to EXC 2 acc. to
DIN EN 1090-2
Intended use: For structural use in all types of construction works
CE marking method: ZA 3.4 acc. to EN 1090-1:2012, annex ZA
Production process: cutting, shaping, holing, welding, mechanical fastening, mounting
and corrosion protection
Manufacturer: **STEEL - FORM d.o.o.**
(Manufacturer or its authorized representative)
Cara Dušana 4
78240 Čelinac, Bosnia and Herzegovina
Manufacturing plant: Cara Dušana 4
(Production site of the manufacturer)
78240 Čelinac, Bosnia and Herzegovina
Confirmation: This certificate attests that all provisions concerning the assessment
and verification of consistency of performance described in Annex ZA
of the standard
EN 1090-1:2012
under system 2+ are applied and the factory production control
fulfills all the prescribed requirements set out above
Begin of validity: 31.01.2023
(First issue date)
End of validity: 30.01.2028
(surveillance date)
Period of validity: This certificate will remain valid as long as the test methods and/or
factory production control requirements included in the harmonised
standard, used to assess the performance of the declared
characteristics, do not change, and the product and the
manufacturing conditions in the plant are not modified significantly.

Remarks: To this certificate belong the welding certificate:
1090-2.0002.TÜVTH.2023.01
and see back

Place / issue date: Erfurt | 13.03.2024


Technischer Überwachungsverein Thüringen e.V.
Certification Body for
Construction Products
(Name, sign)

Valid only with hologram


DAkkS
Certification Body for
Construction Products
(Name, sign)

S steel-form

STEEL FORM d.o.o.

Address: Cara Dusana no. 4, 78240 Celinac, Bosnia and Herzegovina

Tel: +387 51 555 815

**Email: office@steelformdoo.net
info@steelformdoo.net**

ID number: 4404278560005

Bank: ProCredit Bank d.d.

SWIFT: MEBBBA22

IBAN: BA39 1941 0699 5920 12

www.steelformdoo.net